

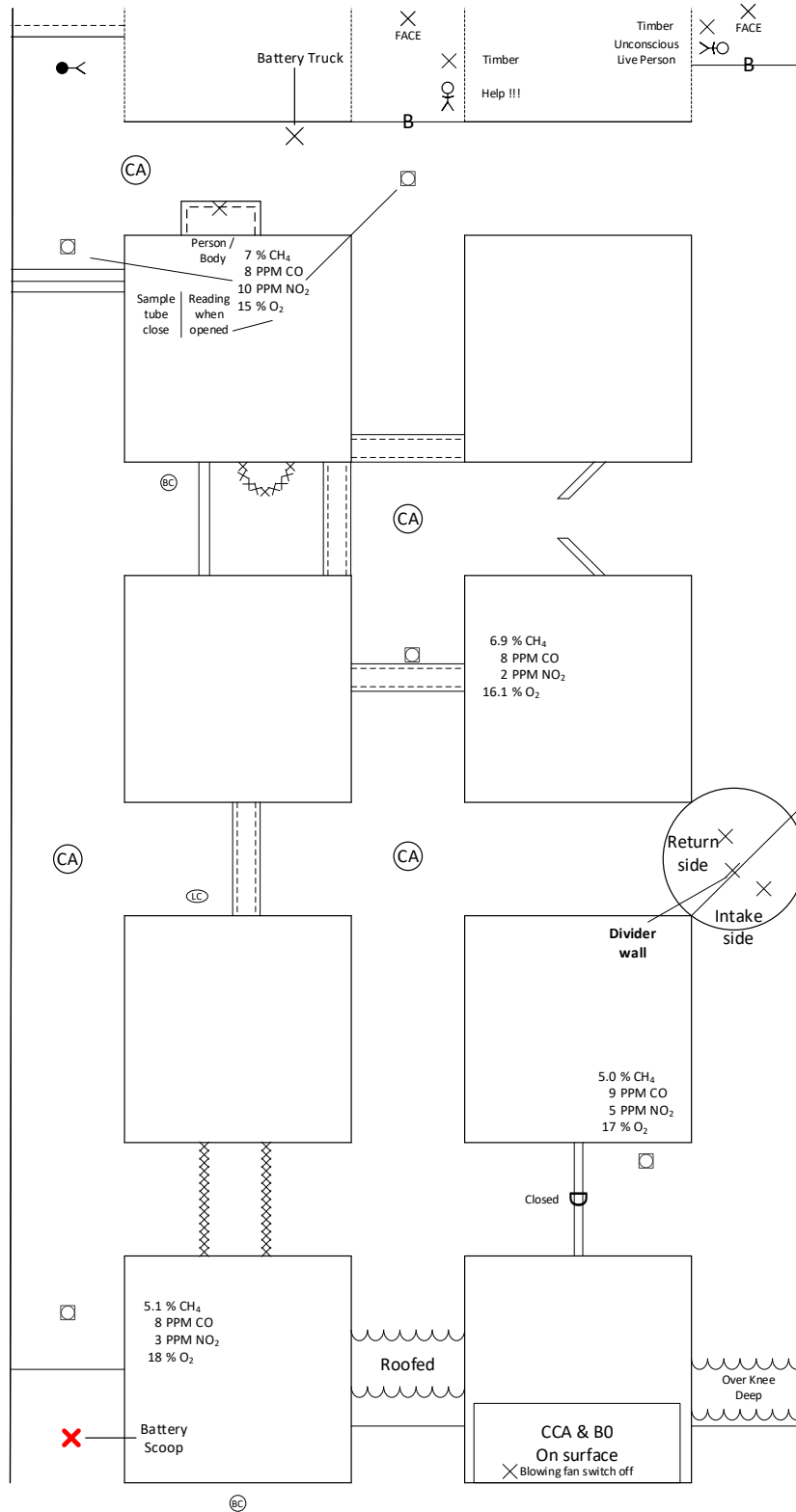
Statement 6.3.21 dk

- 4 miners are missing
- Blowing Fan on top of intake side of split shaft in no. 3 entry
- The fan is off at this time and cannot be reversed
- The fan can be turned on and off, but never stalled while in operation
- The mine maps are not up to date
- BO / CCA is on surface

Written Instructions:

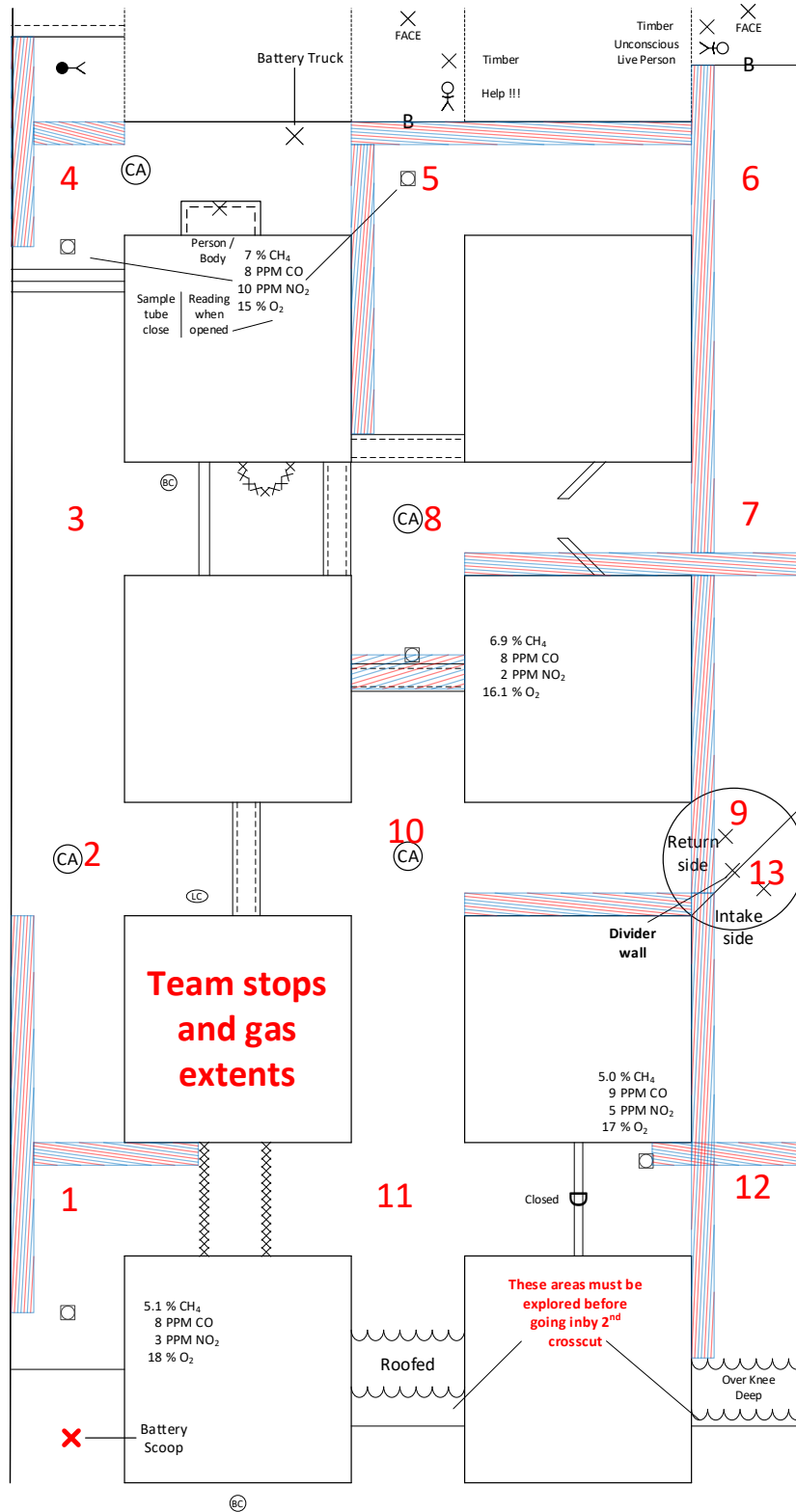
- Explore the entire mine
- Carry only 2 brattice cloths while traveling
- Bring all survivors to the surface

6.3.21 dk

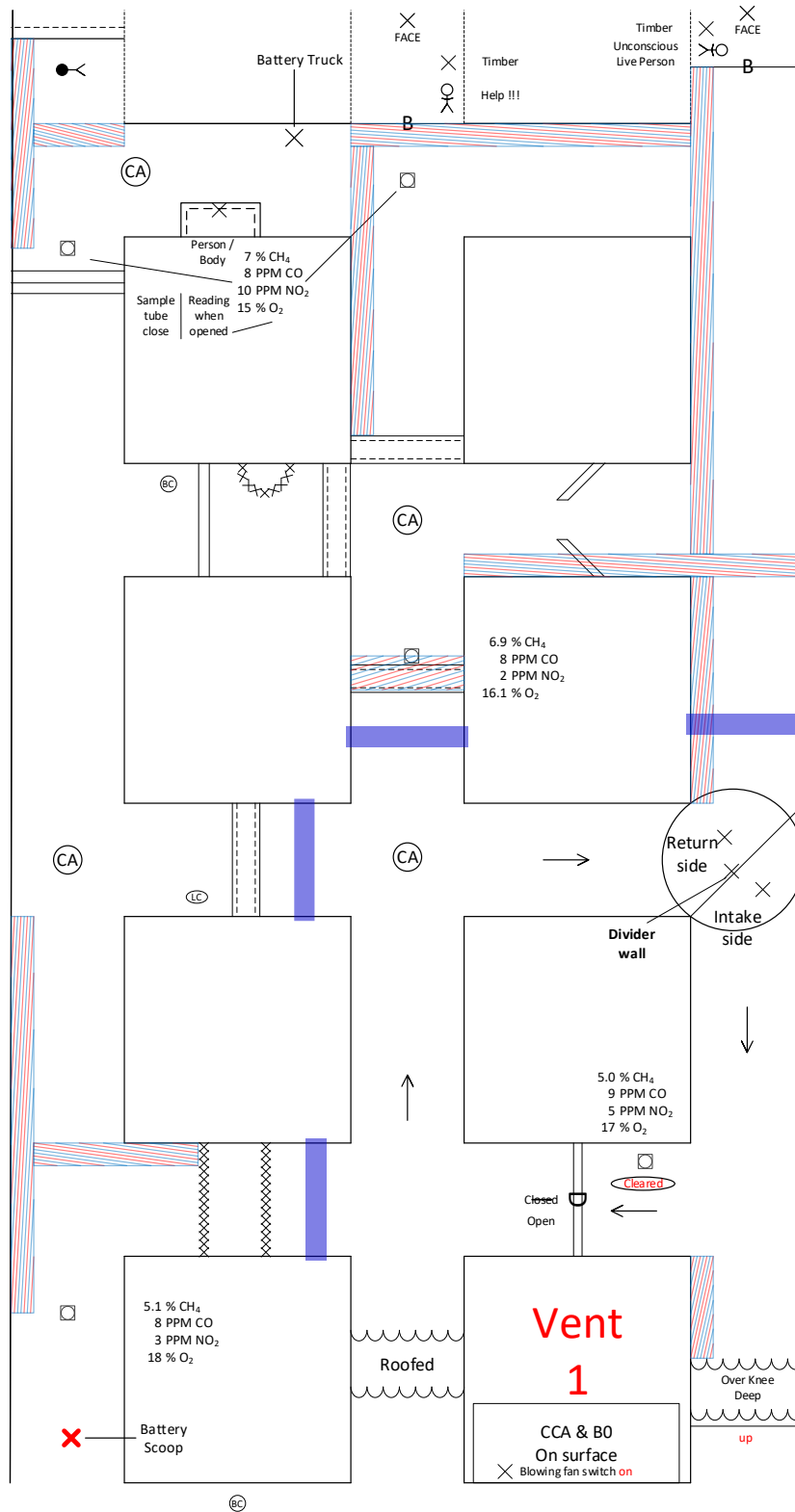


Surface

6.3.21 dk

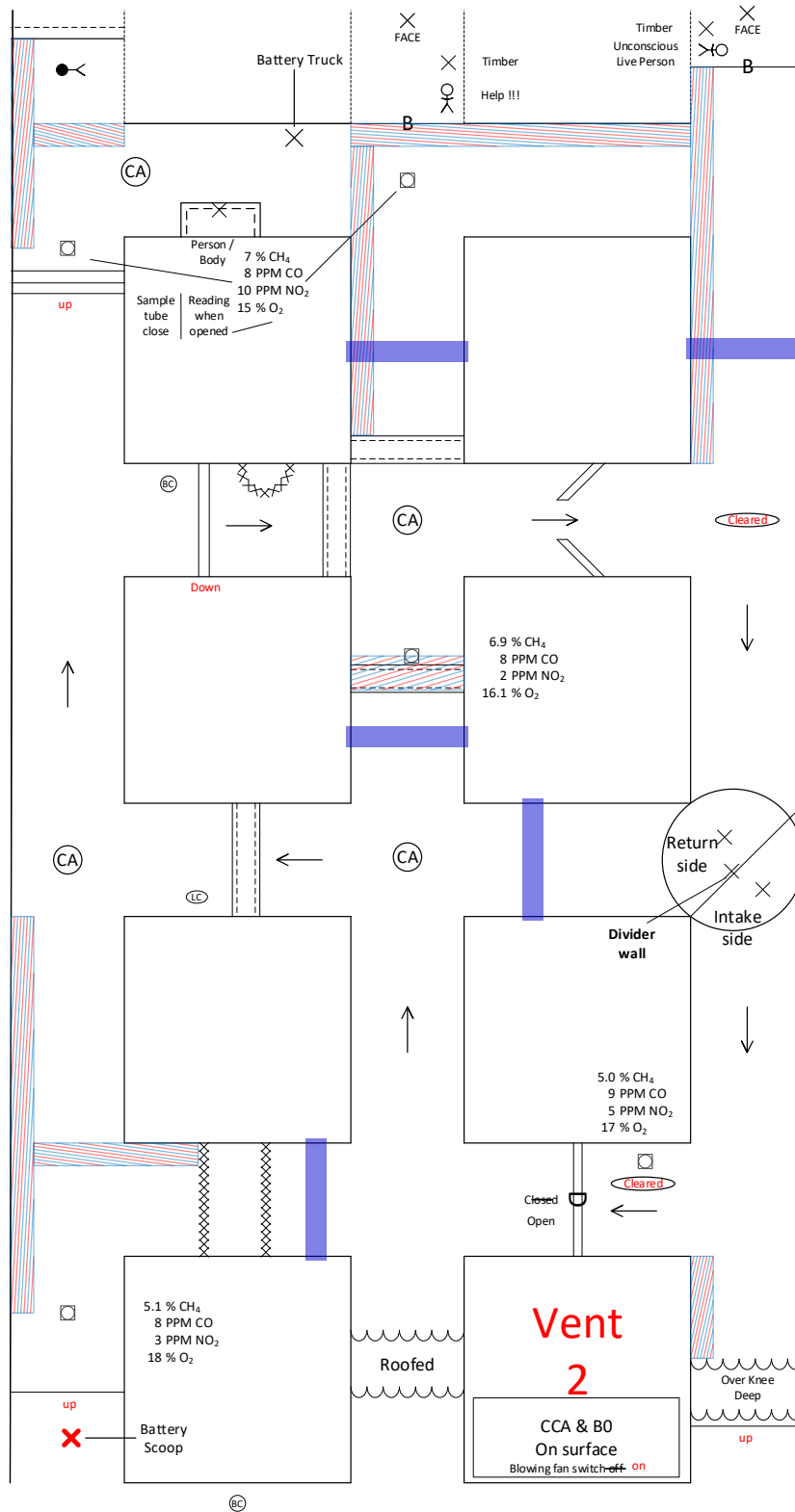


6.3.21 dk



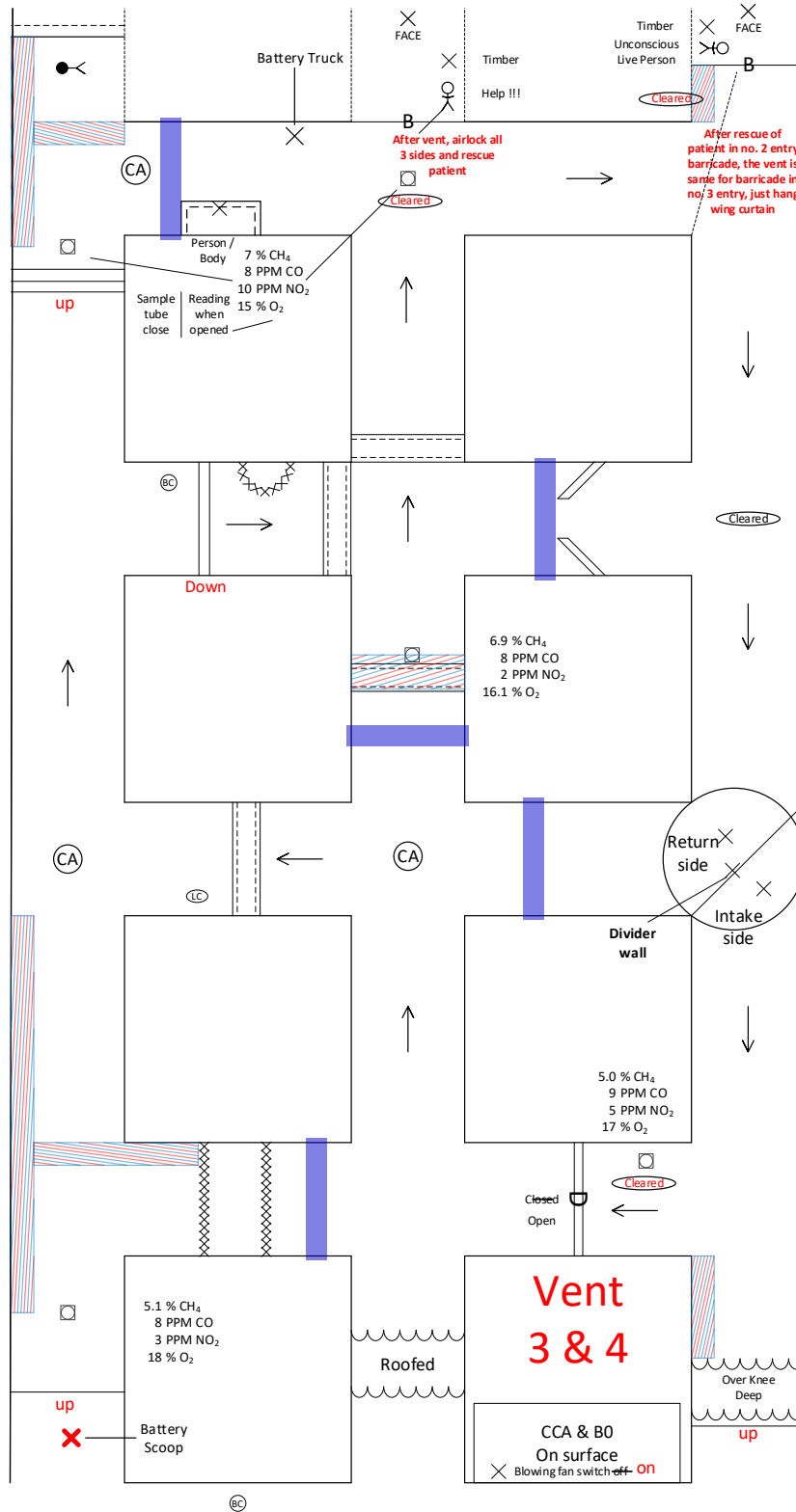
Surface

6.3.21 dk



Surface

6.3.21 dk



Surface

Problem Keys

- Exploring areas at water roofed and over knee deep before going past 2nd crosscut
- Follow mapping rule for mapping seal and gas readings given to team
- Dotted line areas must be filled in on maps where team has explored , also a solid line must be drawn in where faces are encountered
- Rule 42.... You must airlock before breaching seals
- 3 airlocks for breaching barricade in no. 2 entry
- Timber to person in unsafe roof after rescue of patient in barricade in no. 3 entry