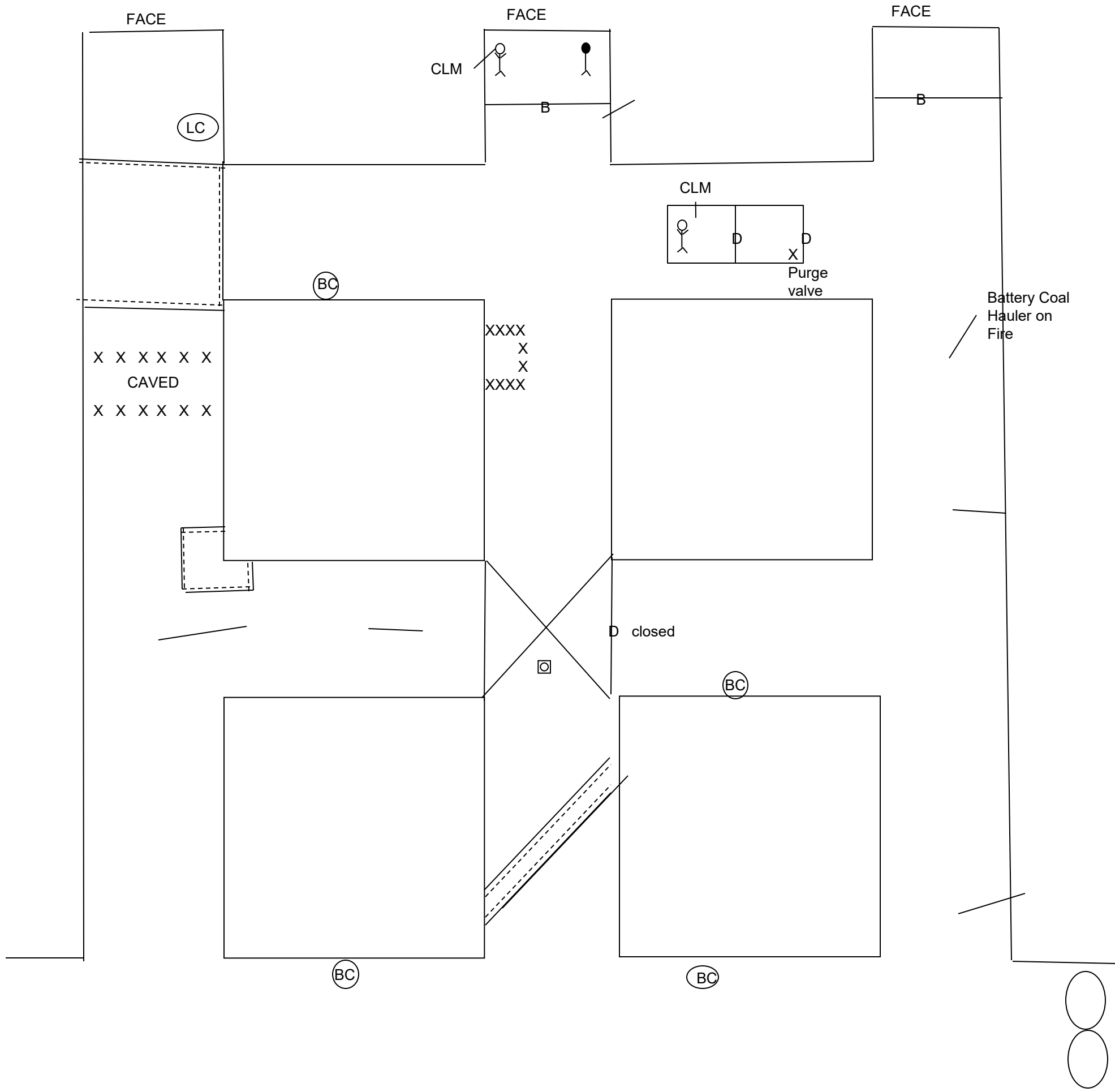


# 2016 SIC Skills Problem A

# 2016 SIC Skills A Handout Map



□ Field Map

# 2016 SIC Skills A Statement

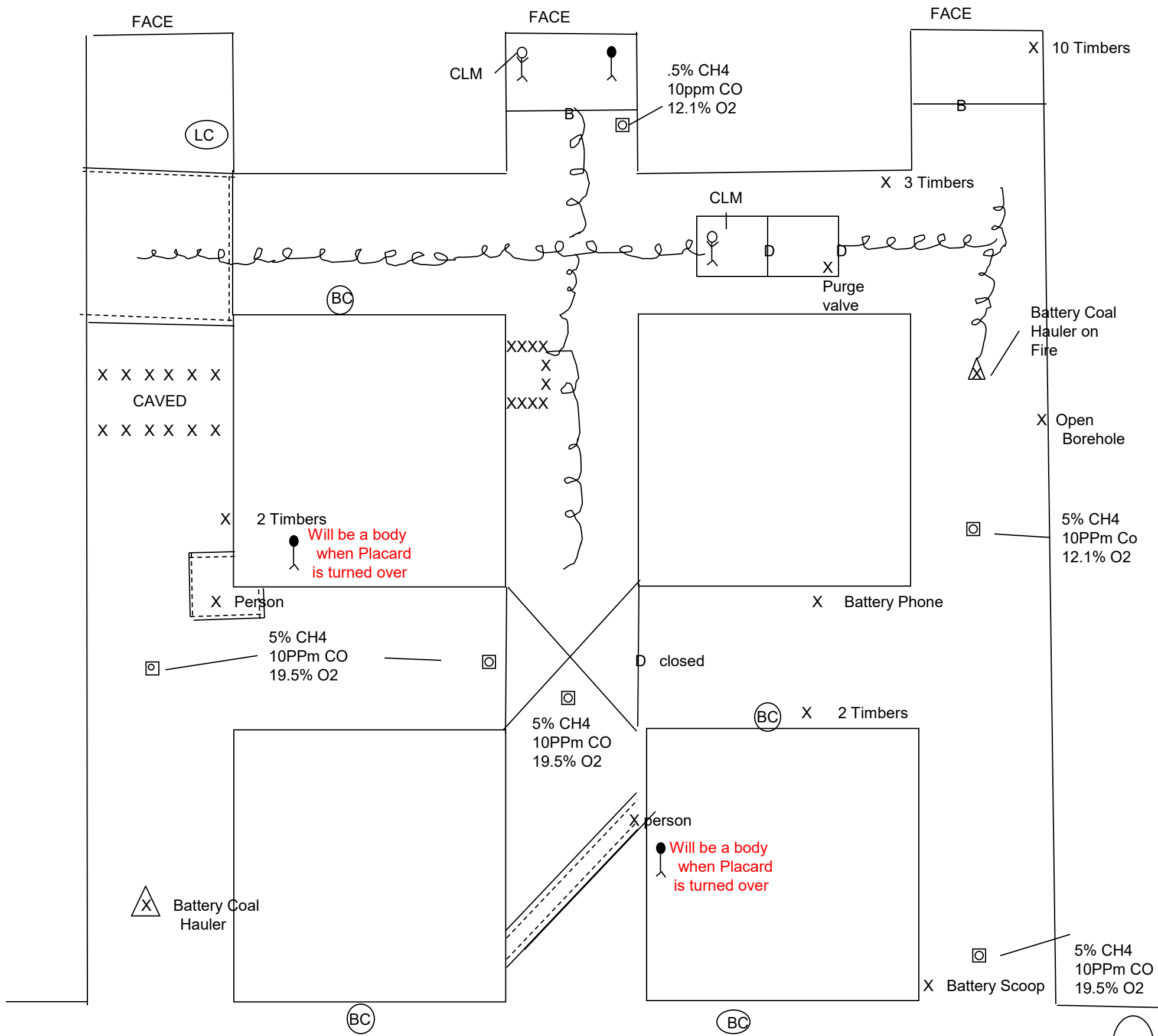
- Welcome to the SIC Number 2 Mine. We have a problem. Early this morning in our #3 head gate unit, the section foreman reported a battery scoop caught fire and the section filled with smoke. The foreman and a nine man crew were working on this section. The foreman and four of his crew have made it to the surface. We have established fresh air at the mouth of the unit. The fan is off at the present time. The fan may be started or stopped as needed. The fan is reversible, and is in the exhaust mode at the present time. All this can be done by asking the superintendent. The map is up to date. There is a backup team on the surface, and all agencies have been notified.

# 2016 Sic Skills

## Mine Rescue Problem A

- Explore the mine in its entirety where safe to do so.
- Account for all missing persons and bring all live people to the fresh air base.
- You may only carry two sets of building material.
- The backup team can build and tear down stoppings in the fresh air base.

# 2016 SIC Skills A Field Map

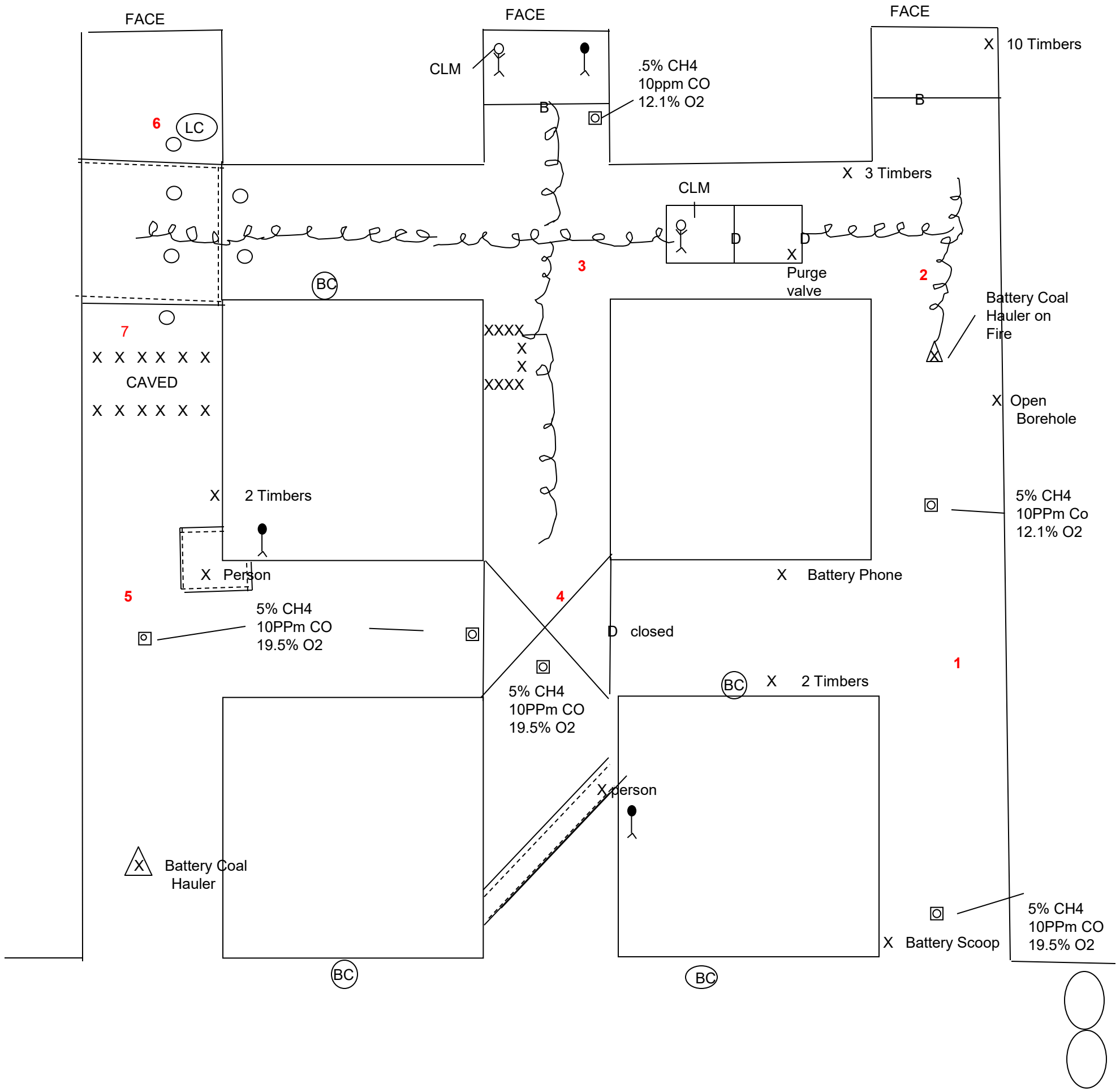


□ Field Map

# KEYS TO THE PROBLEM

- The explosive mixture in # 3 entry in by B –X cut stops at the open borehole
- The smoke in # 2 entry cannot be moved until everyone is accounted for.
- The battery phone in B X- Cut cannot be moved until gas under the overcast is removed.
- The in by corner of the unsafe roof in #1 entry at the face X-Cut must be timbered to acquire the line curtain. The out by corner may be timbered to explore the area between the caved and the unsafe roof. .
- The whole intersection must be timbered to vent through it as it is full of smoke.

# 2016 SIC Skills B Team Stops

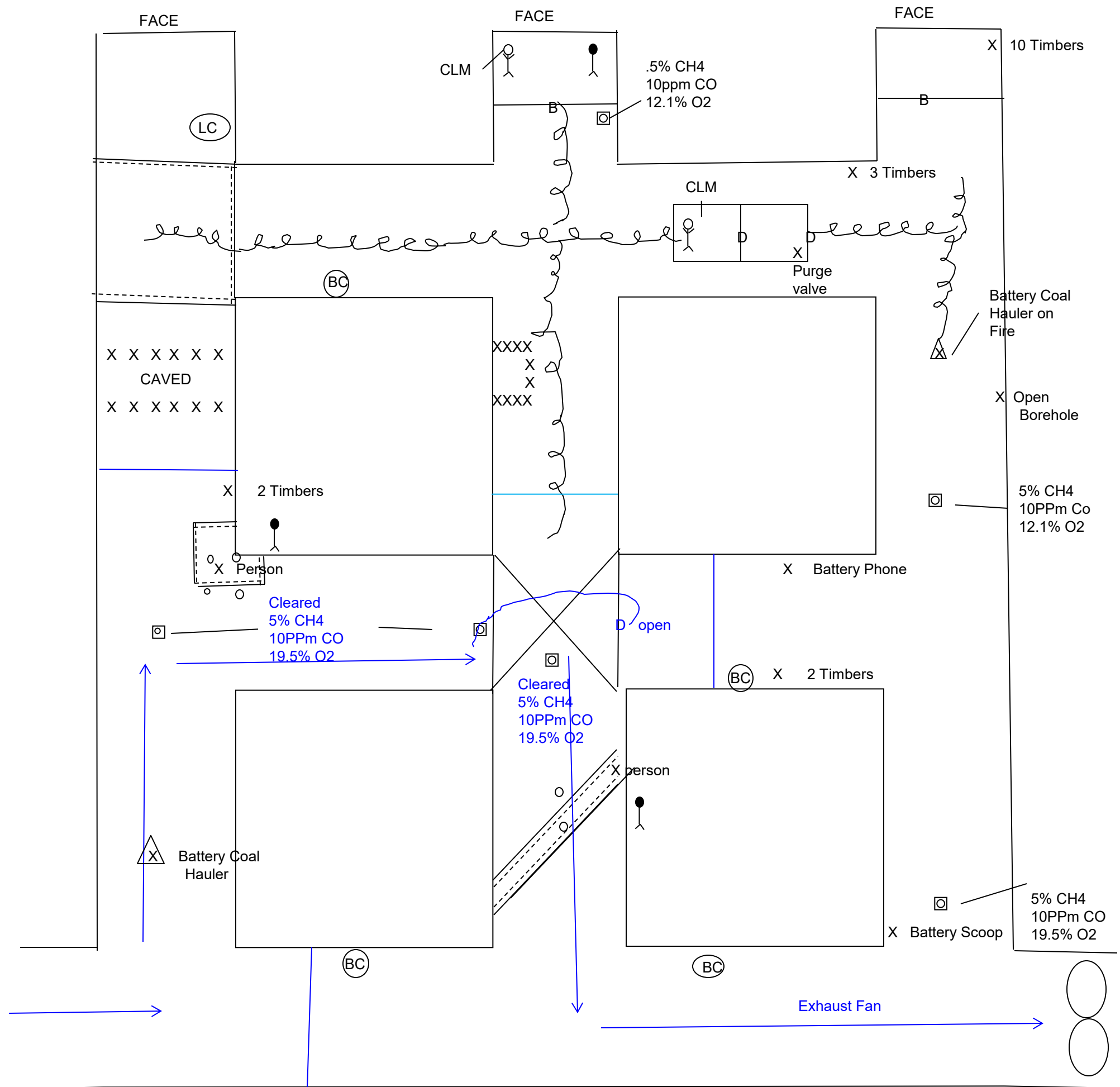


□ : \_\_\_\_\_

# Patient Statement for barricade & the RA

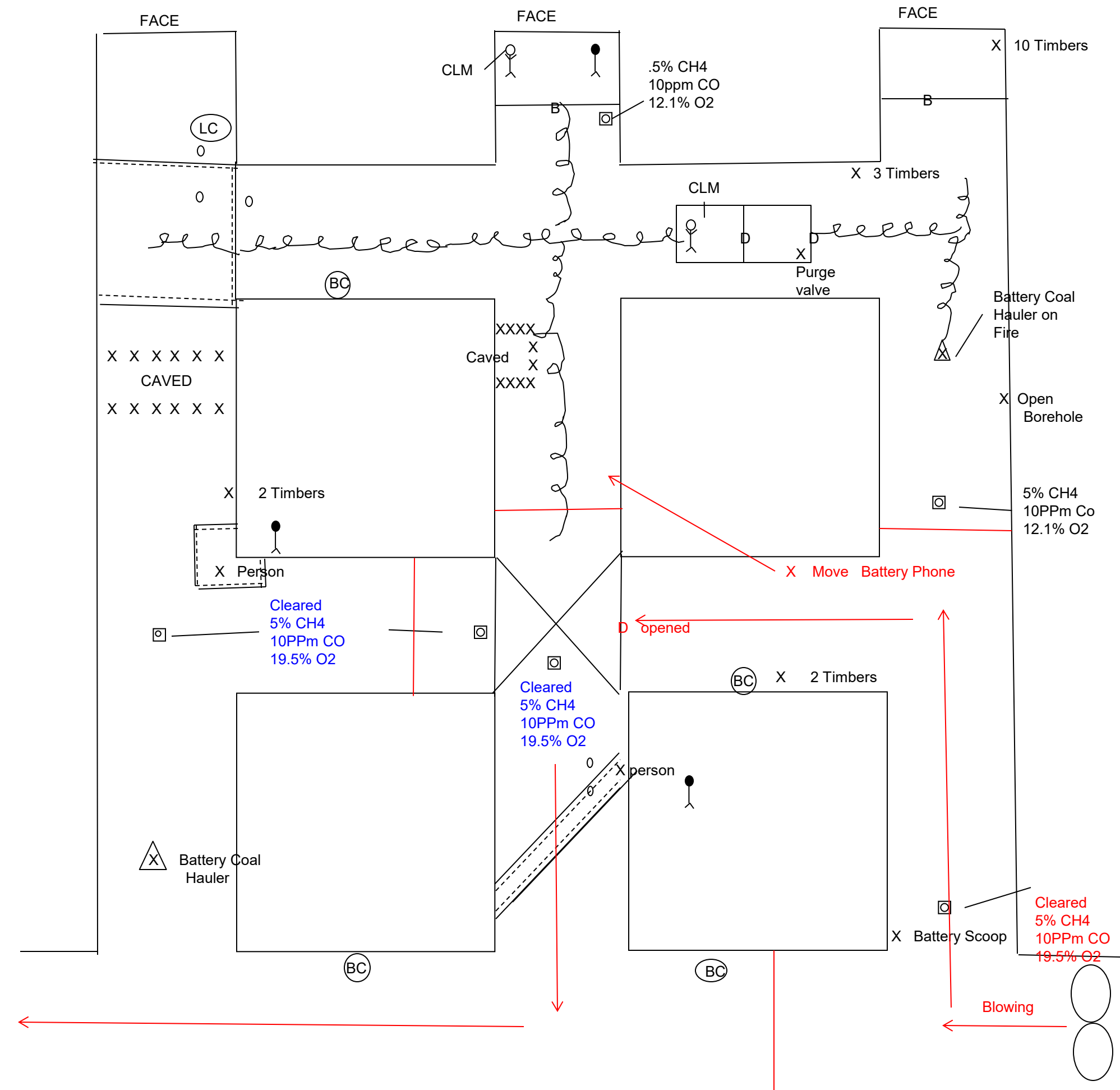
- HELP GET ME OUT .

# 2016 SIC Skills A 1<sup>st</sup> Ventilation



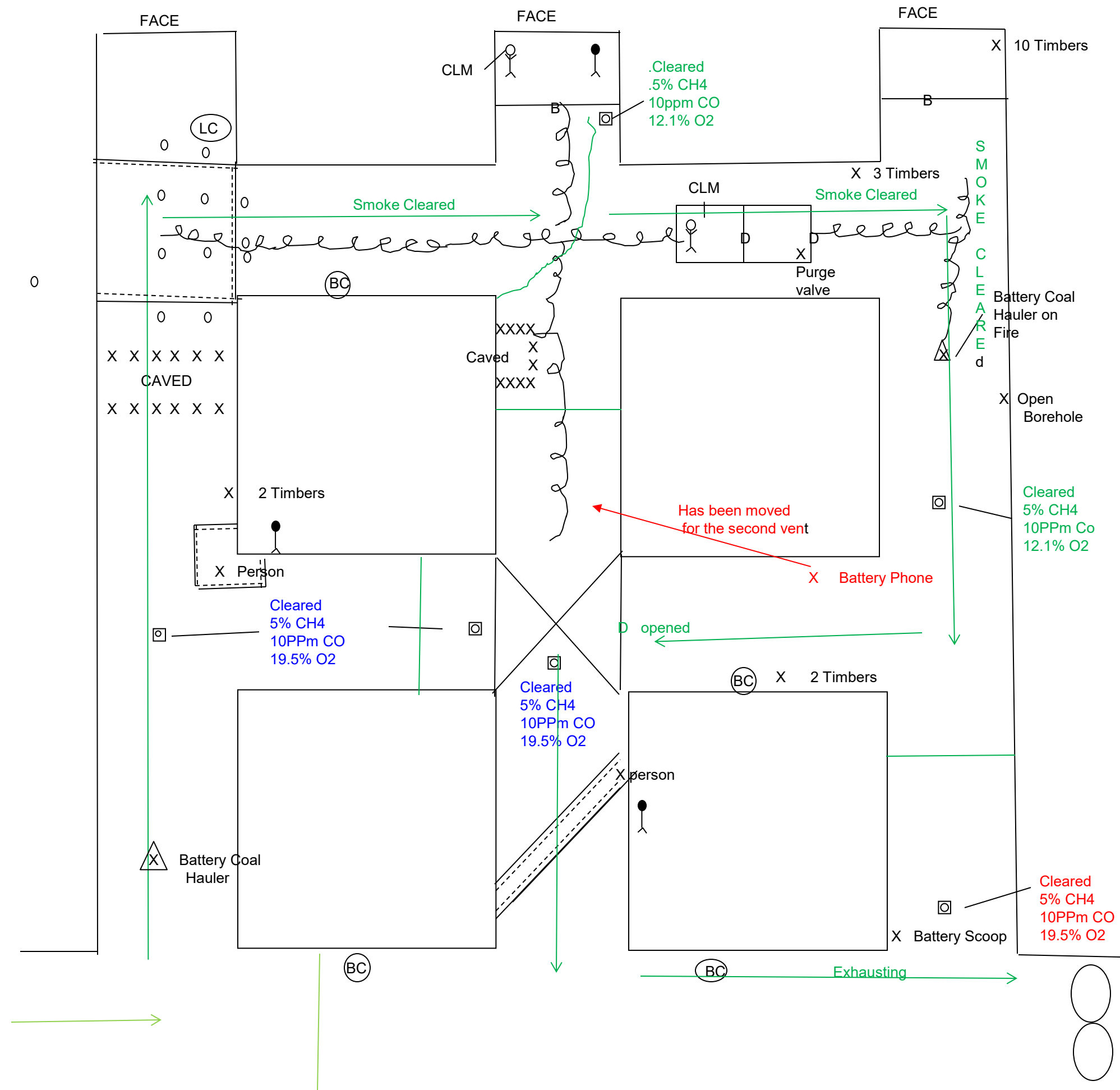
First Ventilation Map: \_\_\_\_\_

## 2016 SIC Skills A Possible Second Ventilation



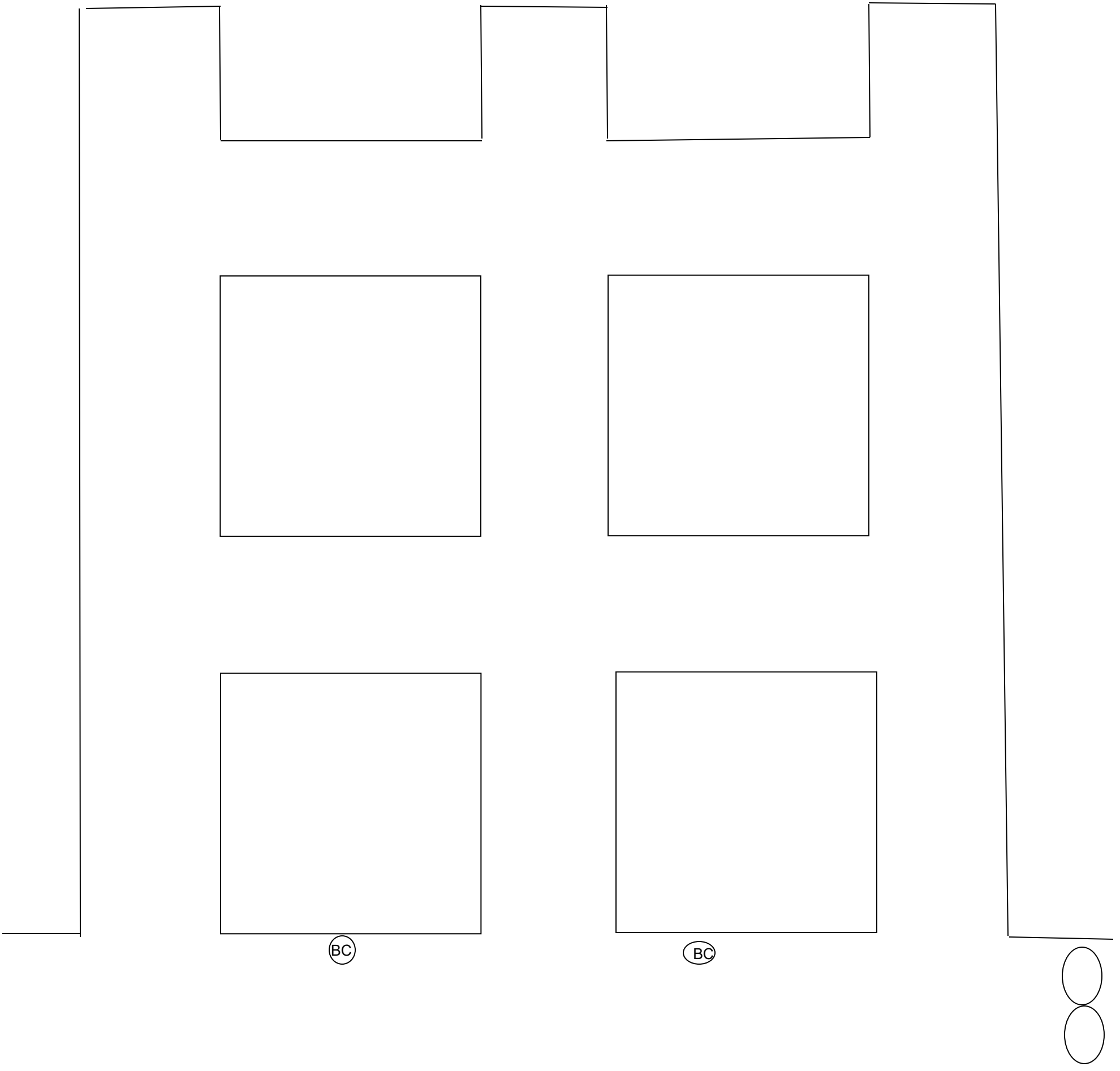
Possible Second Ventilation Map: \_\_\_\_\_

## 2016 SIC Skills A 2<sup>nd</sup> or 3<sup>rd</sup> Ventilation



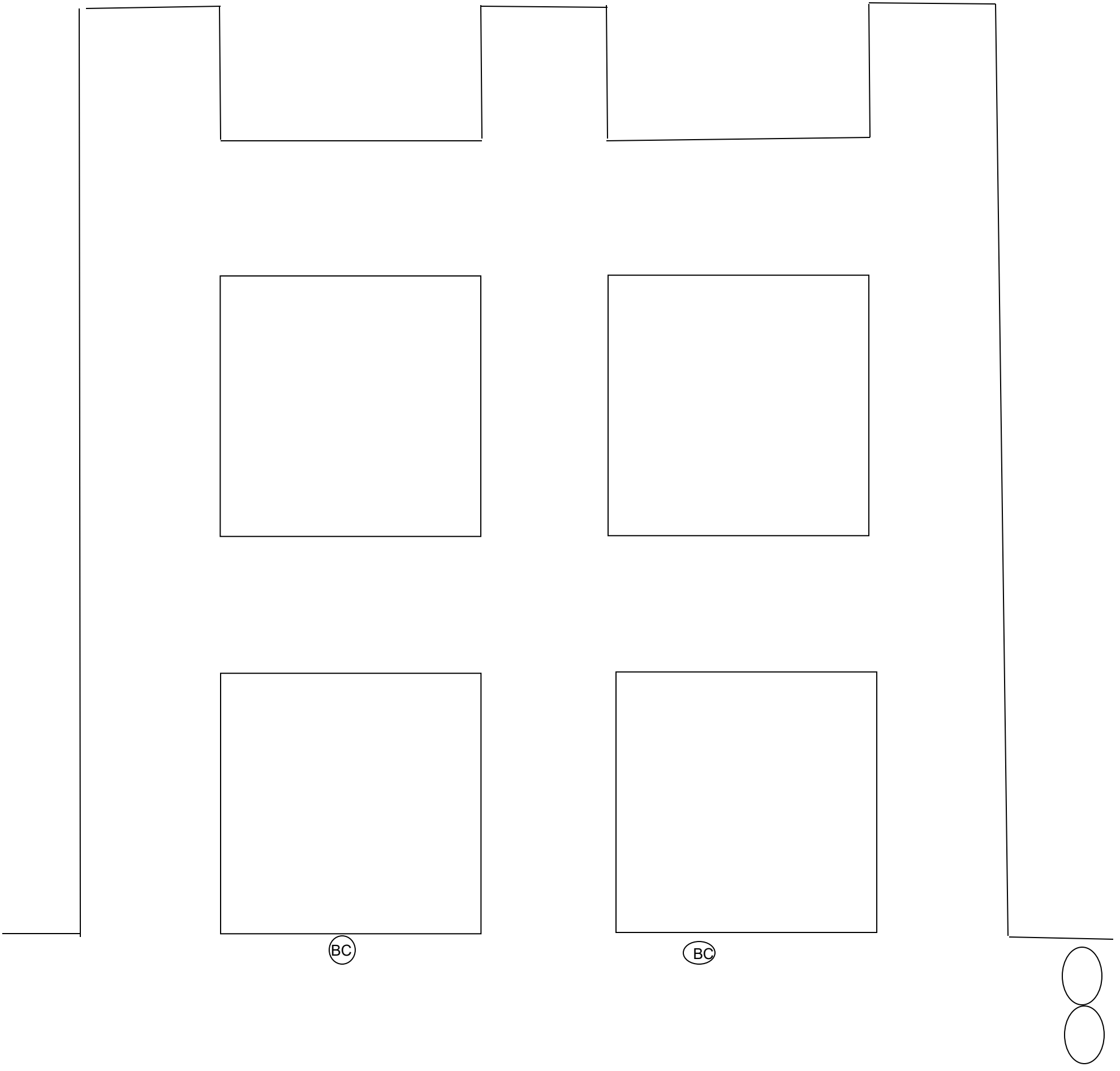
2<sup>nd</sup> or 3<sup>rd</sup> Ventilation: \_\_\_\_\_

# 2016 SIC Skills Team Map



Team Map    Team # \_\_\_\_\_

2016 SIC Skills Briefing  
officer Map



Briefing Officer Map

Team # \_\_\_\_\_



Commander Center