

# 2014 A Skills

Mine Rescue Problem

# Mine Rescue Statement 2014 A

- Welcome to the Happy Go Lucky Mine.

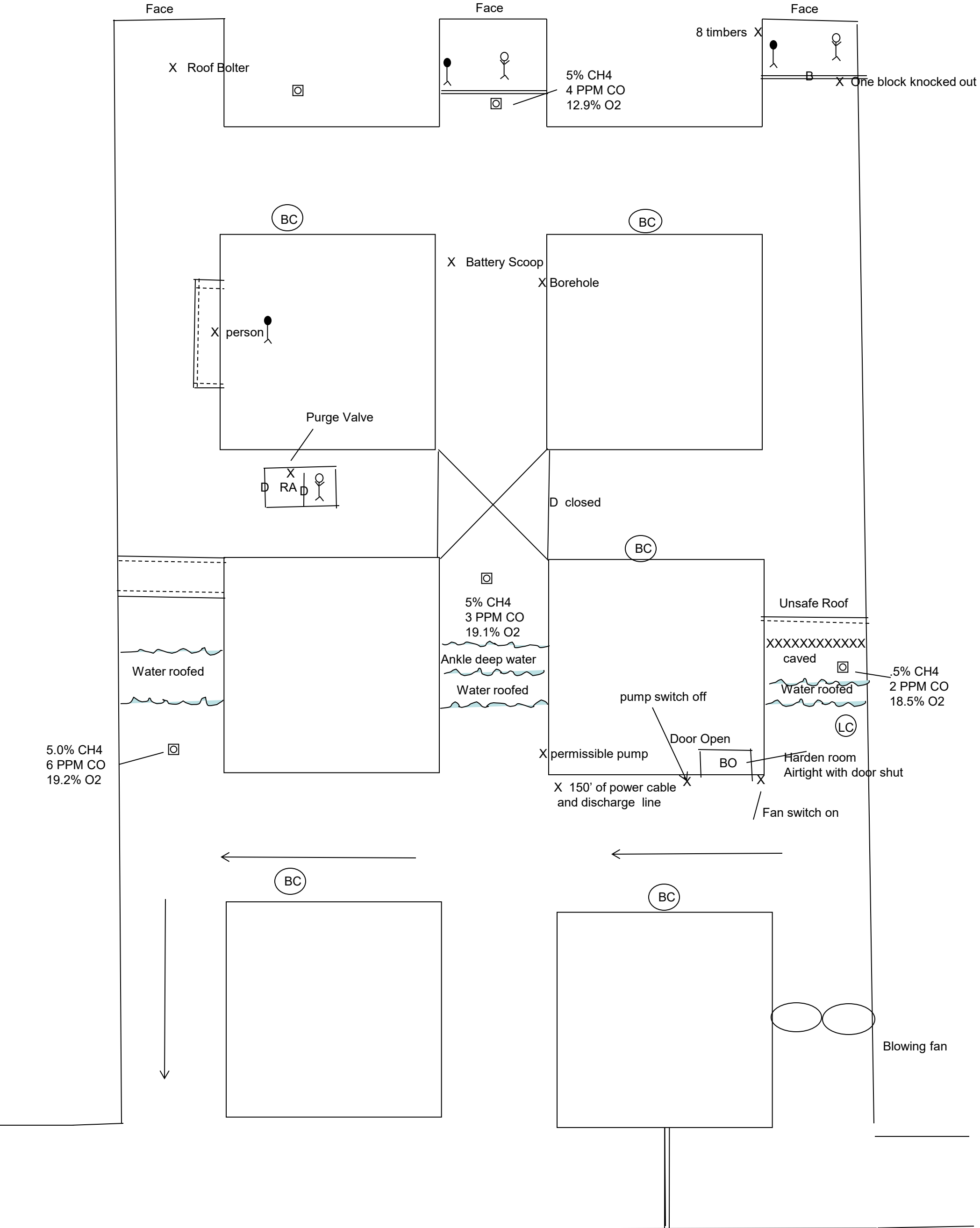
This is a high wall mine with a history of water and bad roof conditions. This mine has one unit operating. We have a day shift and a second shift which rotates every two weeks. Midnight shift is a maintenance shift. This mine generates its power from a diesel generator, which breaks down two or three times a week. The generator has been broke down, but it is running at the present time. I received a call from the mechanic on the unit. He stated that there was a problem on the unit ,and then we lost communication. We have had no further contact from the unit. There is power to the fresh air base. All power in by the fresh air base is off The fan is a blowing fan, and is on another power source. The fan is running, but may be turned off and on as needed. The fan has been examined and is being monitored. The map is up to date. We do not know how many people are underground. The tag board fell off the wall and all the tags are on the floor. That is all the information I have at this time.

# Mine Rescue Problem

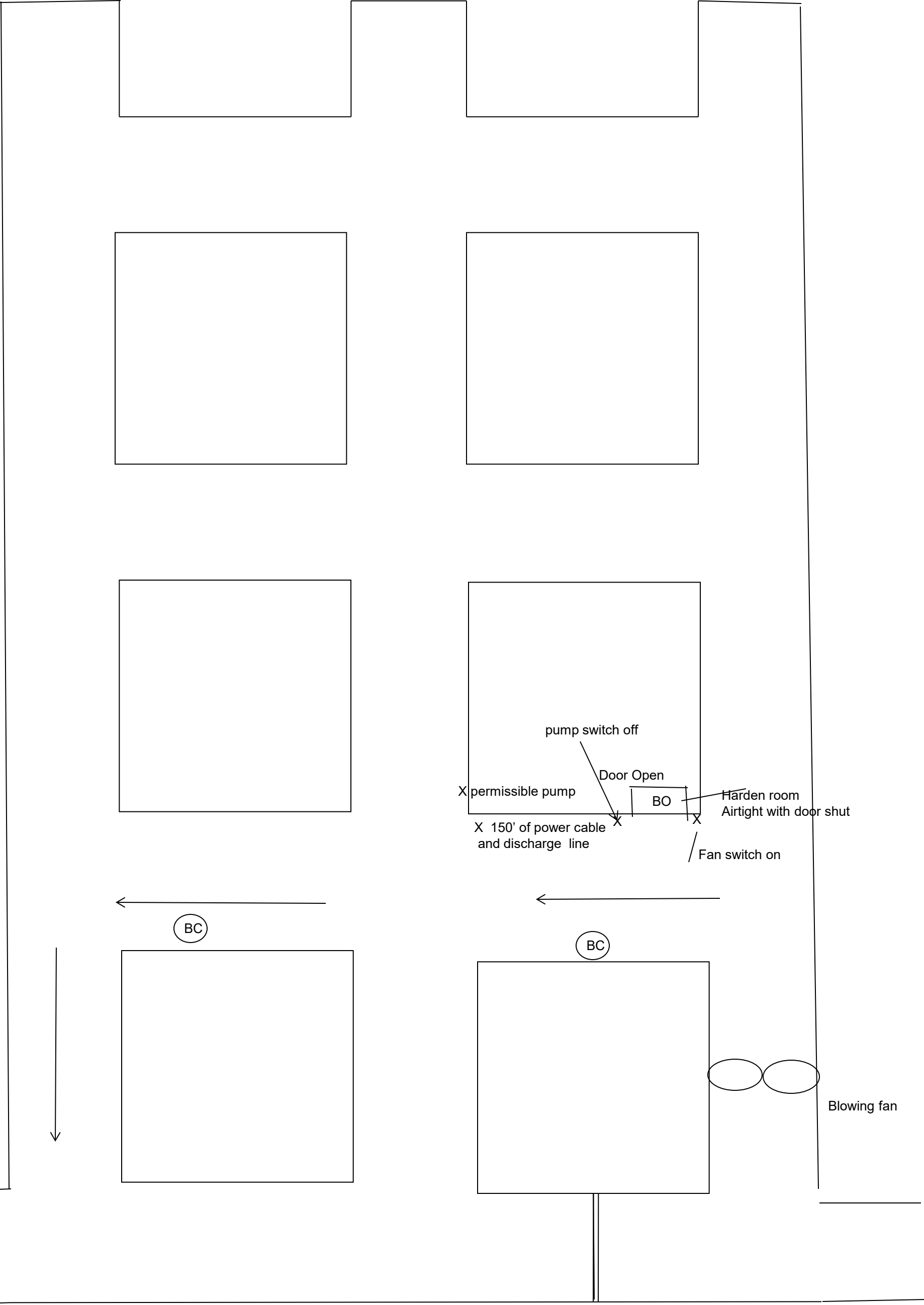
- 2014 Skills Problem

Make the mine in its entirety, where safe to do so. Account for all missing person, and bring all life persons to the Fresh air base,

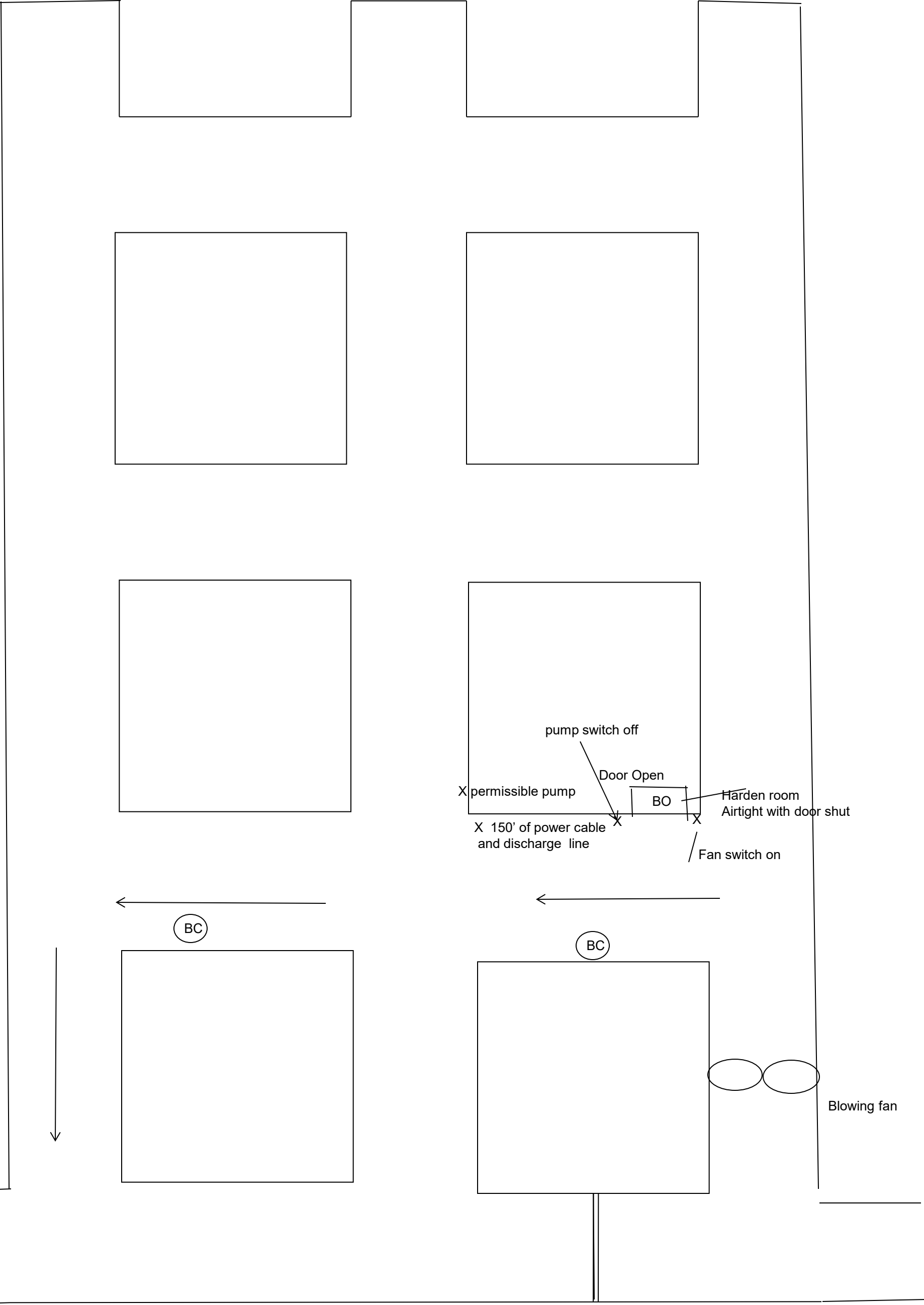
Field Map



Briefing officer Map



Team Map



# Patient Statement

RA

Help get me out

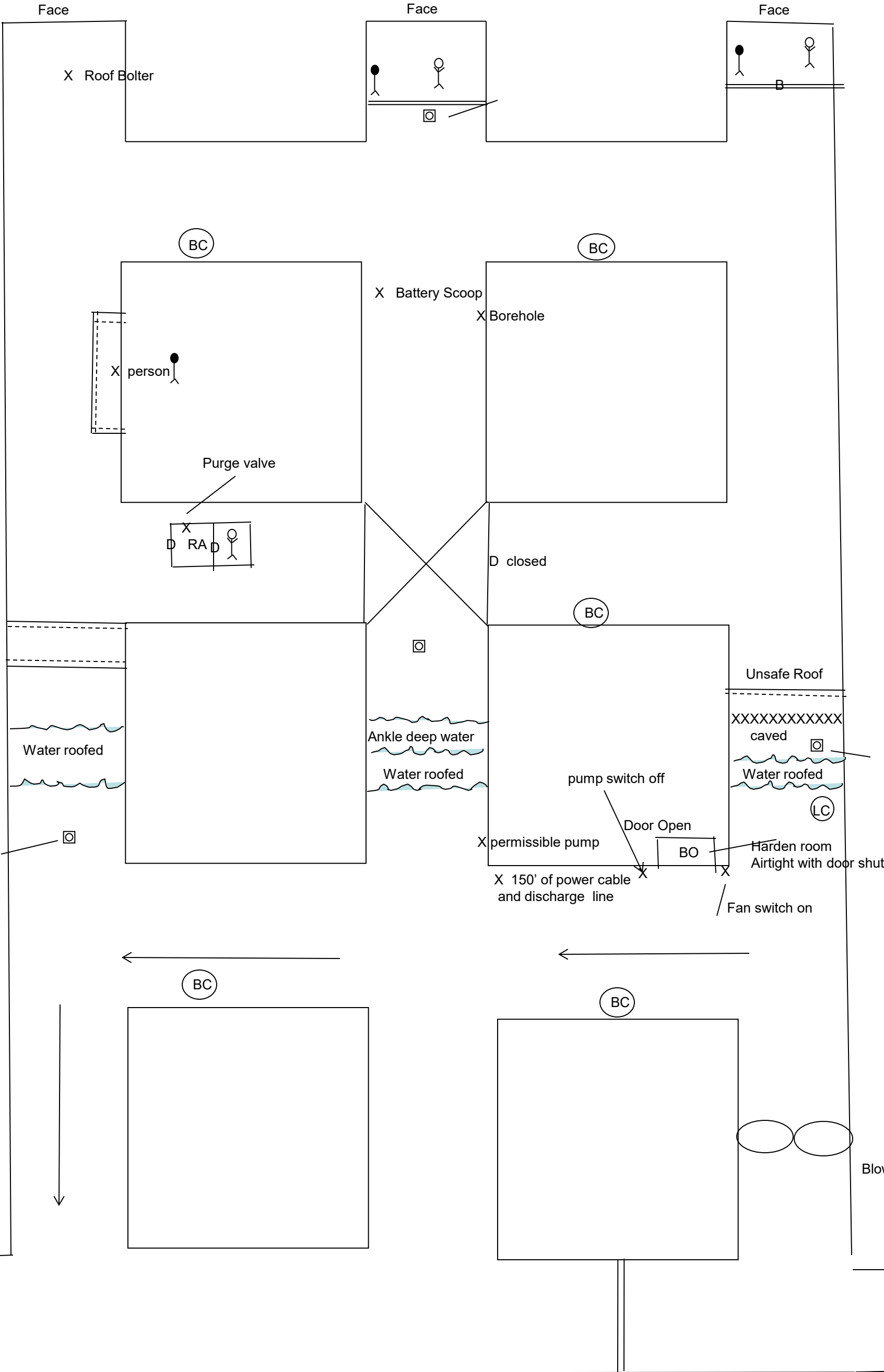
# Patient Statement Barricade in #2

Help get me out

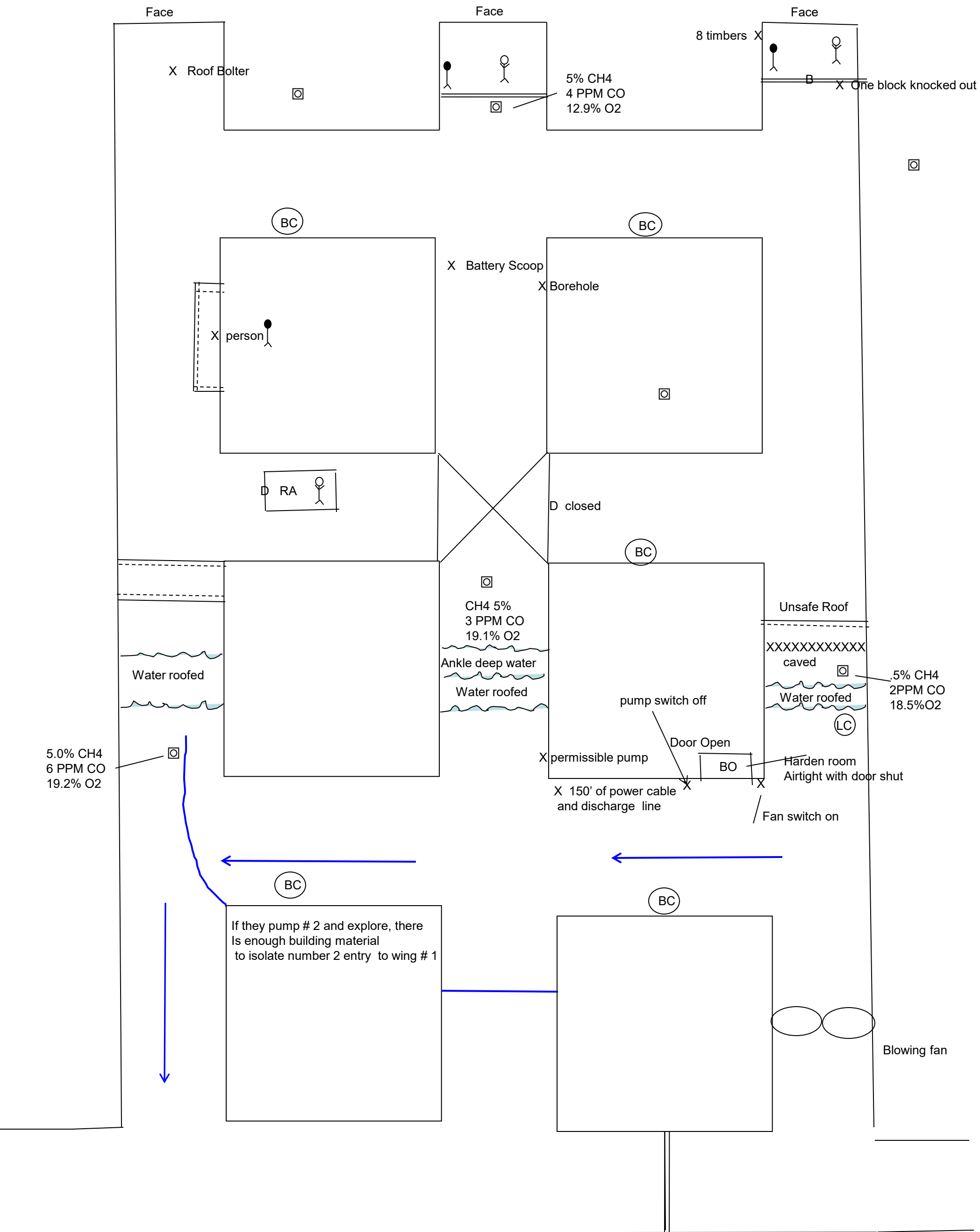
# Patient Statement Barricade in #3

Help get me out

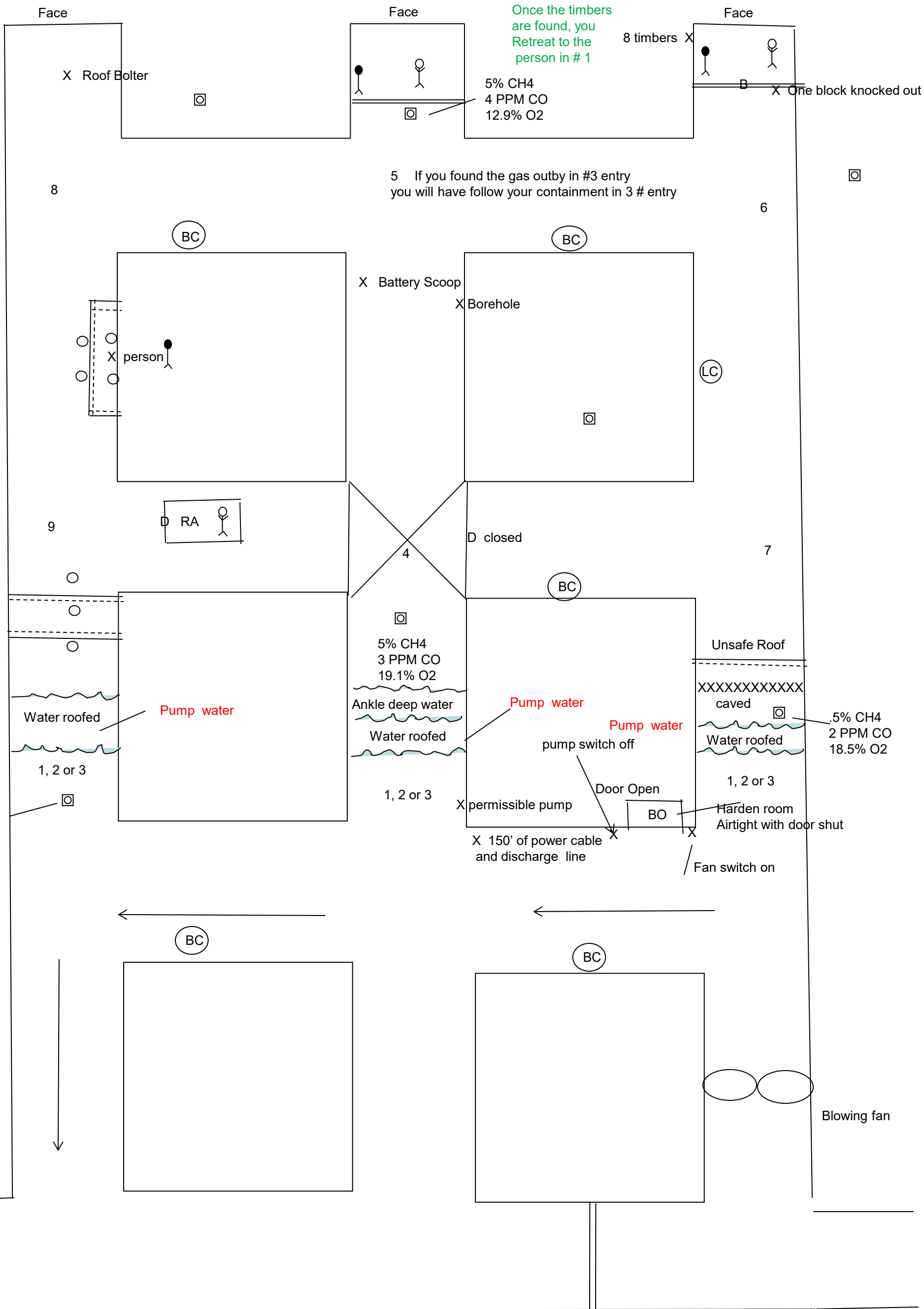
2014 SIC Skills  
Handout Map



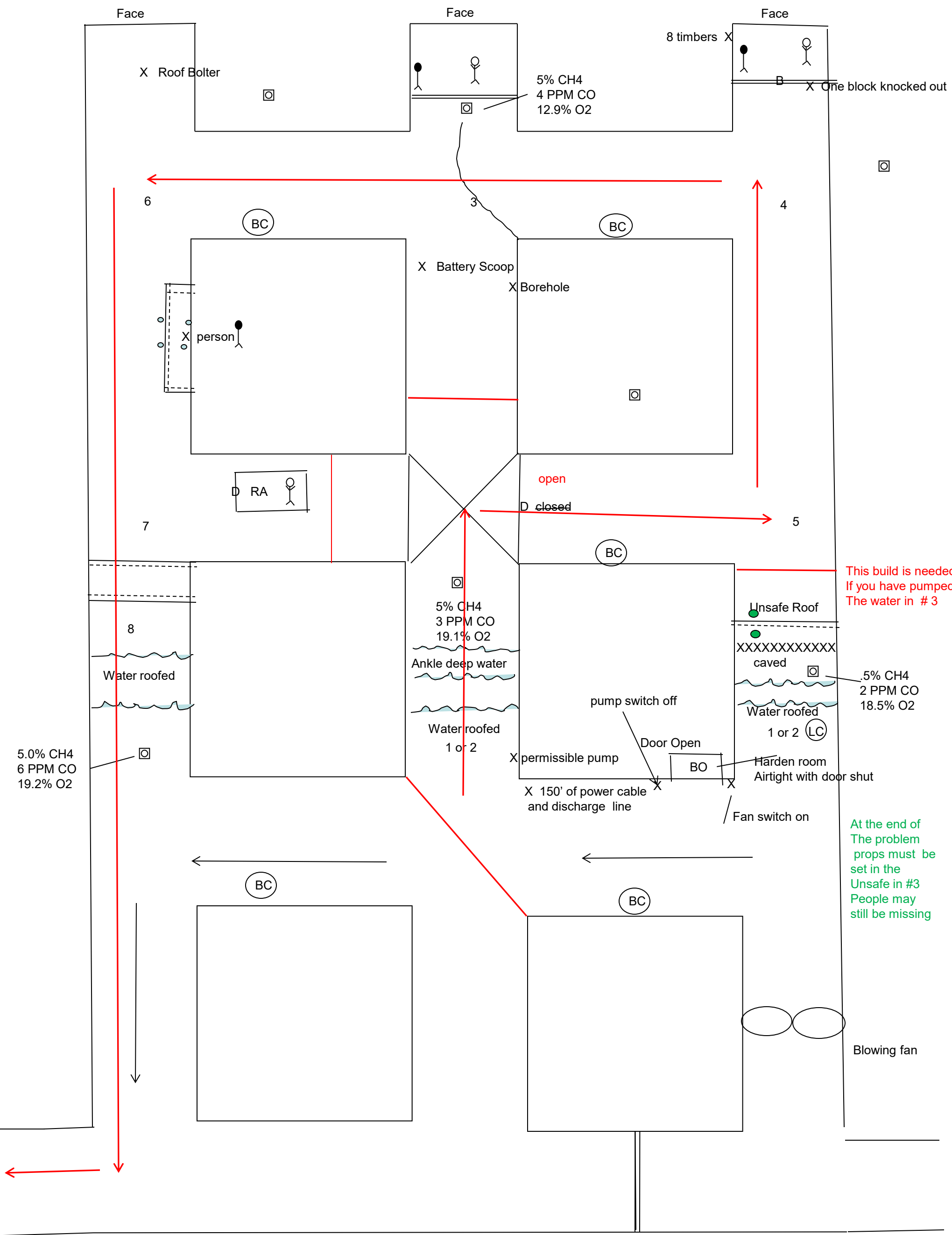
First Vent



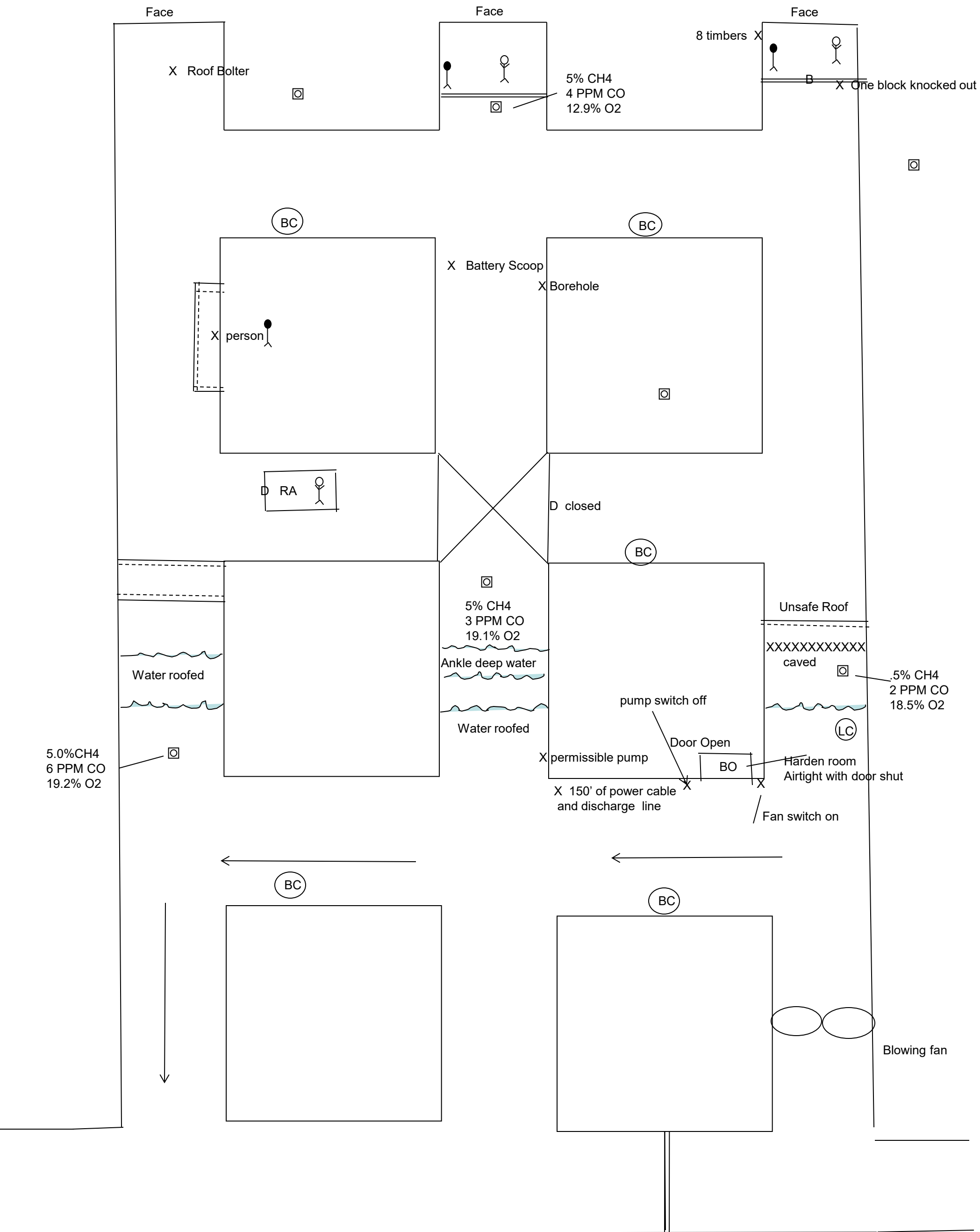
Team stop Map



Second Vent



Judges Map



Briefing officer Map

